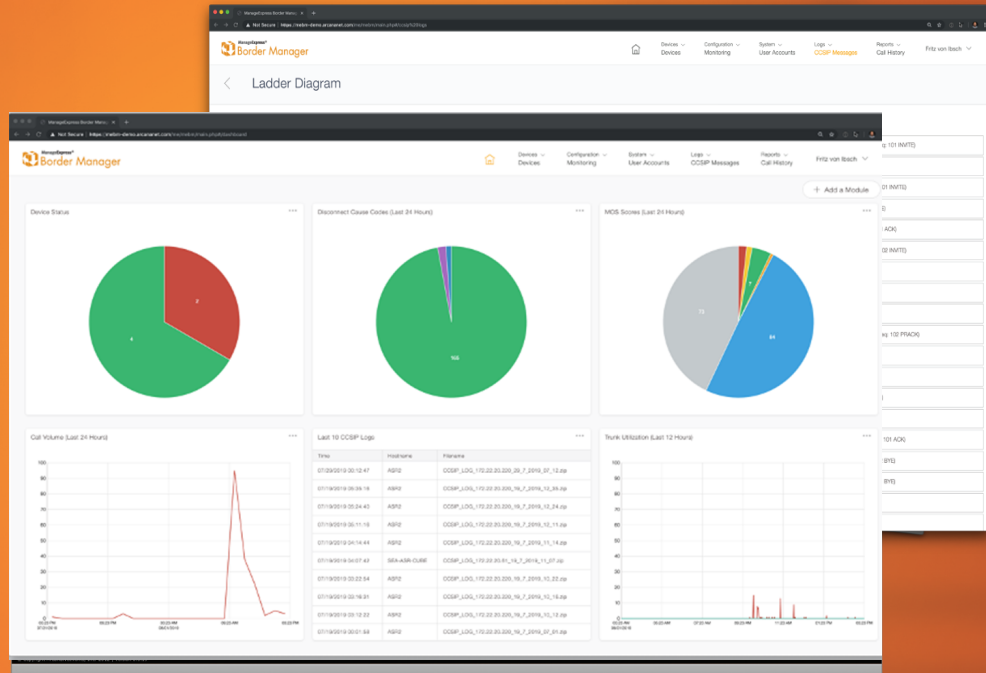


Product Highlights:

- Simplified provisioning and management
- Uniform policies across all Session Border Controllers
- Call Detail Reporting
- Voice Quality Monitoring
- SIP ladder diagrams
- Trunk monitoring with alerts



* Screenshot of ManageExpress® Border Manager software.

Centralized management for Session Border Controllers

ManageExpress® Border Manager (MEBM) enables seamless delivery of Cisco's Session Border Control - Cisco Unified Border Element (CUBE). It reduces operational costs by provisioning SIP applications and providers, enabling remote site management, and providing real-time and historical troubleshooting tools, all from a single user interface.

MEBM is designed as a unified solution which offers extensibility that can be leveraged to automate real world tasks. By utilizing a limited number subject matter experts to create/modify templates for commonly performed tasks, you empower junior staff to manage them on a day-to-day basis and reduce the chance of errors. Not only does this simplify management, but it also frees up your experts to deal with more complex tasks.

The Monitoring and Troubleshooting features of MEBM provide a window into the performance of the CUBE environments. A large number of call quality metrics are available like Mean Opinion Score (MOS), Delay, Jitter, and Loss for calls overall; they are also broken down by ingress and egress and at time intervals within a specific call. If additional information is required for troubleshooting, MEBM can instantiate logging of SIP debugs that can then be seen in a graphical SIP Ladder diagram with the ability to view the messages at each SIP leg.

Device Support

- Cisco ASR 1000 series
- Cisco ISR 4000 series
- Cisco Cloud Services Routers





A Multi-tenanted Solution

Features	Description
✓ Deploy	Enables a rapid, simplified and secure delivery of CUBE from a single unified management solution, reducing your TCO (Total Cost of Ownership).
✓ Configure	Easily configurable and manageable; MEBM can handle automated day 2 configuration management for all CUBE models and nearly any other Cisco model switch or router.
✓ Monitor	Provides monitoring, investigating and reporting functions for call quality in real time. The single pane user interface makes it user friendly and allows for a topside view on the call quality as well as the ability to look at each call in itself.
✓ Control	Voice policy management provided throughout the entire path with real time monitoring and notifications.
✓ Troubleshoot	Historical logging of SIP call flow data and error reporting for after-the-fact analysis, eliminating the need to reproduce error conditions.
✓ Alert	Device monitoring and email alerting for a range of conditions including CPU and memory usage, concurrent calls, and dial peer/SIP provider statuses.
✓ Device Backup	Scheduled configuration backups with the ability to compare to previous versions.
✓ HA Support	Monitor CUBEs in hardware-level and network-level high availability configurations. Support for redundant MEBM collection servers for SIP data.
✓ Health Dashboard	At-a-glance health metrics for all CUBEs. Configurable and modular interface.
✓ Configuration Templates	Use MEBM-standardized or user-defined configuration snippets to apply uniform configuration across all devices. Simplify day-to-day operations as well as large scale rollouts of config changes.
✓ Validated SIP Configurations	Cisco-validated SIP tenant and dial peer configurations. Support for dozens of common providers across the world.
✓ Error Reporting	MEBM will parse SIP data and automatically flag SIP error codes. Easily scan historical data to pinpoint error conditions.
✓ IOS Upgrades	Upload new Cisco code versions to MEBM and then use the automated process to push the files via HTTPS and reboot during maintenance periods.

System Requirements

- Processor: 3.0 GHz+
- Cores: 2+
- RAM: 12 GB+
- Disk Space: 200 GB (OS partition 80 GB, App partition 120 GB)
- OS Services: IIS web service
- Browser Support: Chrome or Firefox
- OS: Windows 2016 or 2019 Server, Standard or Enterprise Edition
- VMware Support: Yes
- Database Server: Microsoft SQL 2016 or 2019*

* Microsoft SQL Express is included with purchase but limited to 10 GB

